

READ THIS FIRST

TITAN Ammo Box MODEL #AS-2035 Installation & Owners Manual

Failure to follow these instructions will void your warranty and constitute MISUSE of this product and may result in serious injury or DEATH.

WARNING

YOUR PRODUCT WARRANTY DOES NOT COVER DAMAGE CAUSED BY PRODUCT MISUSE. ANY SECURITY SYSTEM IS ONLY AS GOOD AS ITS USER. NO SYSTEM IS 100% CHILDPROOF. FOLLOW ALL INSTRUCTIONS. MAKE SURE THE SAFE IS ALWAYS CLOSED SECURELY AND LOCKED. NEVER GIVE THE COMBINATION TO A CHILD OR LEAVE IT WHERE A CHILD CAN FIND IT. NEVER GIVE THE COMBINATION TO A THIRD PERSON WHO MIGHT GIVE IT TO A CHILD. DO NOT LET A CHILD WATCH YOU ENTER THE COMBINATION. CHANGE THE COMBINATION IF COMPROMISED.

This simple device will allow you to lock your Mag or speed loader in a separate locked container attached to your TITAN Gun Vault.

- It will Accommodate Single or Double stack Magazine up to 5 ½"long.
- All speed loaders not exceed 1 ½ " in diameter.

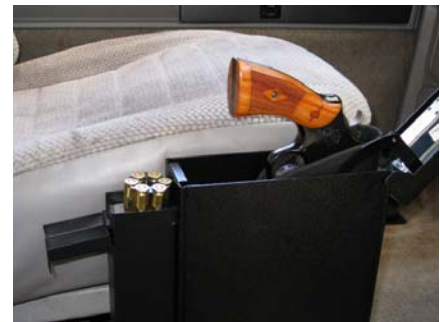
1. Insert bottom base in the vault slot.



2. Rotate and insert top tabs.



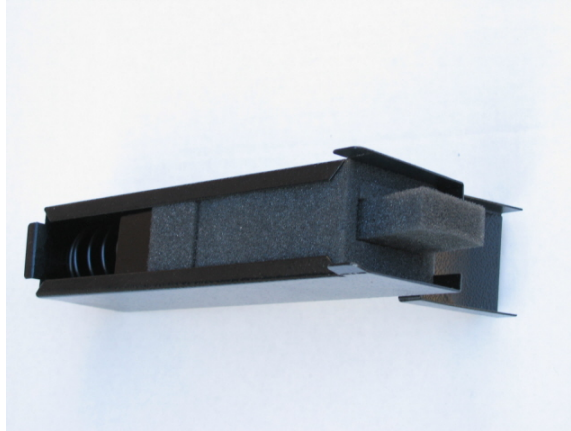
3. Bend tabs inward with your finger.



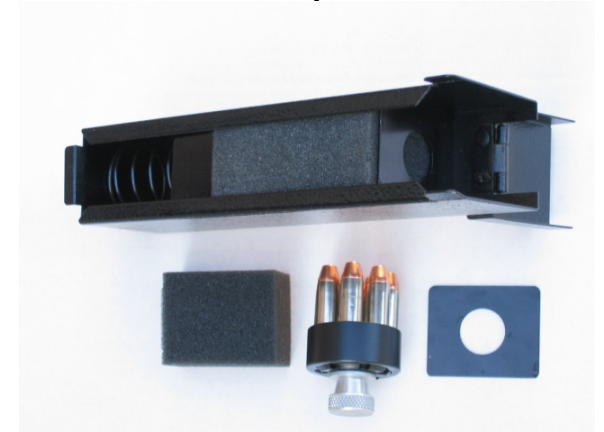
WARNING

IT IS YOUR RESPONSIBILITY TO CHECK WITH YOUR STATE & LOCAL AUTHORITIES FOR THE LEGALITY OF THE USE OF THIS PRODUCT IN A VEHICLE

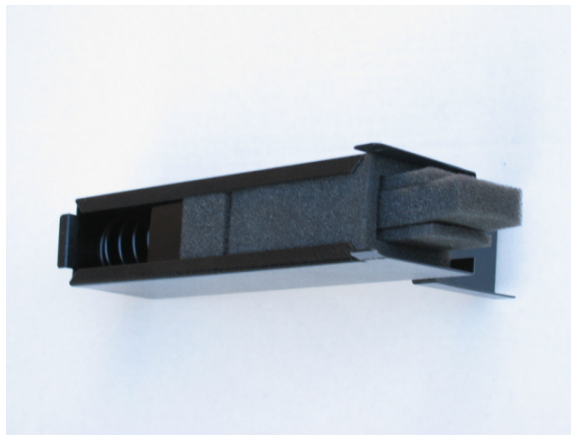
1. To place single stack Mag; remove centre insert.



3. To place Speed Loaders; remove bottom sponge, place one plate over the 3-in sponge as it can be seen in the picture and the other plate over the knob of the speed loader to keep it in the centre.



2. To place double stack Mag, remove both inserts.



4. Final installation with speed loaders.



Titan Security Products Inc.
142 E, Bonita Ave, Unit# 168,
San Dimas, CA. 91773.

www.TitanGunVault.com